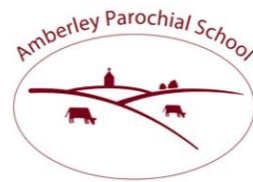




Geography is the study of people and places.



Providing the rich soil that enables
our children to develop deep roots and flourish.

Geographers notice similarities and differences.

Topic:	Skills	<u>Key Vocabulary</u>
 <p>Country - Brazil</p>	<ul style="list-style-type: none"> Ask and answer geographical questions (such as: What is this place like? What or who will I see in this place? What do people do in this place?). Identify the key features of a location in order to say whether it is a city, town, village, coastal or rural area. <p><u>Ongoing Milestones:</u></p> <p>Use basic geographical vocabulary to refer to:</p> <ul style="list-style-type: none"> key physical features, including: beach, coast, forest, hill, mountain, ocean, river, soil, valley, vegetation and weather. key human features, including: city, town, village, factory, farm, house, office and shop. 	<p>City Town Village Coastal Rural Physical Features Human Features</p>
Subject:	Duration	<u>Celebration:</u>
Geography	WC 11.9.23 (1 week)	Share our learning with Key Stage 2
<u>Things to support learning at home</u>		<u>Focus Value</u>
<ul style="list-style-type: none"> Remind the children of the 7 continents (https://www.youtube.com/watch?v=K6DSMZ8b3LE) <ul style="list-style-type: none"> Find Brazil on a map and discuss its location Look at photos of places in Brazil and discuss what it is like. 		



Challenge



Keep on Improving



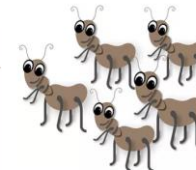
Never Give Up



Concentrate



Be Curious



Cooperate