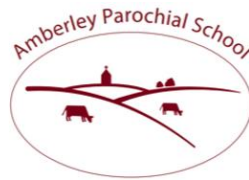



PSHE is about us.



Providing the rich soil that enables
our children to develop deep roots and flourish.

We want to be compassionate, respectful
and cooperative citizens.

Topic:	Skills	<u>Key Vocabulary</u>
 <p>Belonging to a community</p>	<ul style="list-style-type: none"> • What rules are; caring for others' needs; looking after the environment • How rules and age restrictions help us; keeping safe online • Strengths and interests; jobs in the community <p style="text-align: center;"><u>The children will learn:</u></p> <ul style="list-style-type: none"> • about examples of rules in different situations, e.g. class rules, rules at home, rules outside • how rules can help to keep us safe • why some things have age restrictions, e.g. TV and film, games, toys or play areas • basic rules for keeping safe online (also covered in Computing lessons) • whom to tell if they see something online that makes them feel unhappy, worried, or scared • how we care for people, animals and other living things in different ways • how they can look after the environment, e.g. recycling • that everyone has different strengths, in and out of school and that different people have different needs • about how different strengths and interests are needed to do different jobs • about different jobs and the work people do and those whose job it is to help us in the community 	<ul style="list-style-type: none"> -community -safe -rules -restrictions -online
Subject:	Duration	<u>Celebration:</u>
PSHE	WC 9.10.23	BLOG post about our learning
<u>Things to support learning at home</u>		<u>Focus Value</u>
Hold discussions around: your rules at home, children's strengths and interests, the jobs that members of the family do.		Trust



Challenge



Keep on Improving



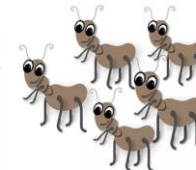
Never Give Up



Concentrate



Be Curious



Cooperate